



Vertical Visions LLC  
6 Point of View  
Bridgeport, WV 26330 USA  
Phone: (304) 933-9330  
Email: [jbell@VerticalVisions.com](mailto:jbell@VerticalVisions.com)  
Website: <http://www.VerticalVisions.com>

## Flat Top, Raptor, and Dual Raptor Bellymount Camera Platforms

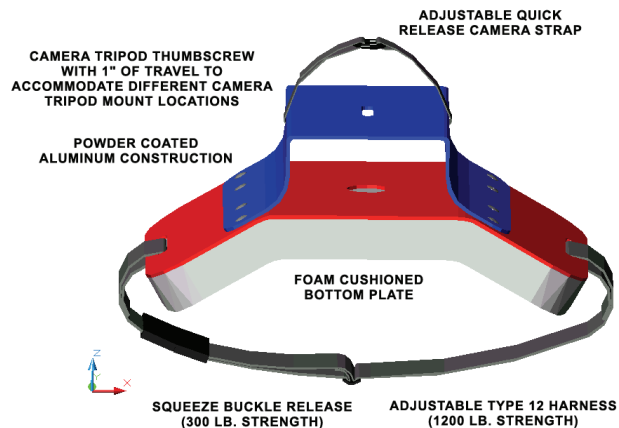
### List of Contents

You should have received the following items with your bellymount camera platform:

- 1 - Bellymount Camera Mounting Platform
- 1 - Thumbscrew, 1/4"-20UNC x 1/2"
- 1 - Pan Head Screw, 1/4"-20UNC x 1/2"
- 1 - Helical Spring Lockwasher, 1/4"
- 2 - Flat Head Washer, 1/4"
- 2 sets - Hook/Pile Velcro, Adhesive-Backed, Approximately 3" Long.



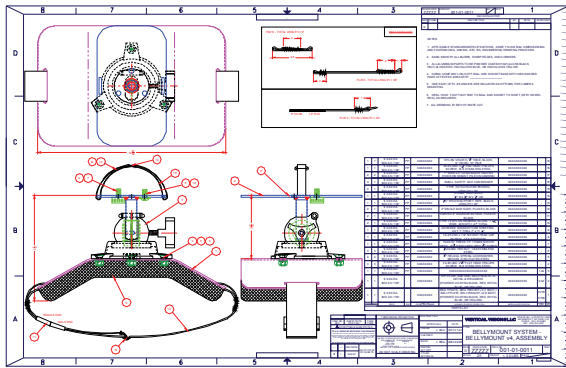
*The Dual Raptor*



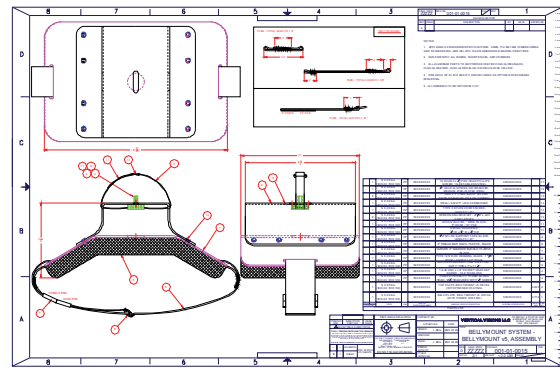
*The Flat Top*

### Design & Construction

Years of computer-aided design, construction, and testing have been put into the release of Vertical Visions' bellymount camera platforms. Each system is designed from strong, lightweight, powder-coated aluminum that is resistant to normal wear and tear. The belts (Type 12, 1200 lb. strength) and ball & socket mechanisms (select models) are designed to withstand the forces presented by some of the largest cameras in the most demanding situations. Multiple locations are available on the top mounting plate for mounting of a variety of video or still cameras. A securing strap, attached to the top plate, restricts camera movement. Your bellymount camera platform has been carefully designed to provide you with the quality tools you need to capture great video or stills.



***The Raptor and Dual Raptor***



***The Flat Top***

**Camera Types**

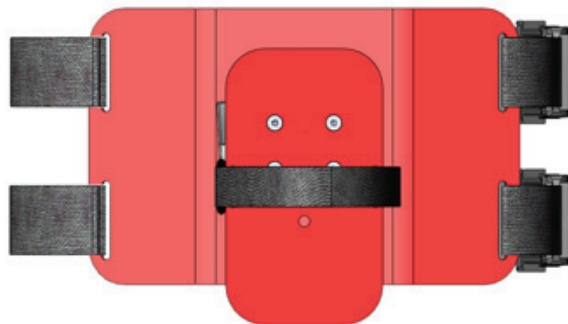
Our beltmount camera platforms can accept either video or still cameras of normal size and up to 20 lbs. in weight. Cameras heavier than 20 lbs. can be used in certain situations where acceleration and deceleration of the beltmount camera platform is minimal. For attachment to the beltmount, your camera should contain 1/4"-20UNC (or similar size) threads that are often used for tripod mounting. Nearly all video or still cameras contain tripod mounting threads and alternate mounting methods are possible for nonstandard cameras. If you have questions regarding specific uses of our systems with your cameras or mounting techniques, please feel free to call or email us.

**Camera Attachment**

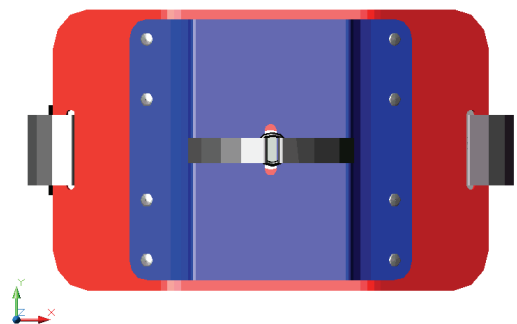
The Velcro supplied with your order is used to prevent camera twisting while in use. Place both strips of the adhesive-backed pile (soft) Velcro under your camera near the tripod mounting threads. Do not block the tripod mounting threads or cover your camera serial number. Place your camera on the beltmount top plate and secure it using one of the tripod mounting screws provided. Mark the location of the Velcro strips. Remove your camera and place both strips of the adhesive-backed hook (loop) Velcro on the top plate of your beltmount according to your marks. Apply manual pressure to the Velcro strips to ensure adequate attachment.

Place your camera back on the beltmount and align the tripod mounting threads on your camera with the proper hole in the top plate. Insert and tighten the thumbscrew through the top plate into the camera. If the thumbscrew is too long, remove the thumbscrew and add either the helical spring lockwasher, the flatwasher, or both in order to secure the camera. Your camera is now secured to the top plate and should not be able to twist. Finally, adjust the securing strap around the top of your camera by mating the Velcro on one end. In addition, it is advised to thread the beltmount securing strap through any pre-existing hand straps that may exist on your camera. As an option, you can utilize the truss head phillips screw rather than the thumbscrew if you prefer. Just tilt the top plate to the side and use a phillips head screwdriver to install. It is advised to periodically check the thumbscrew or truss head screw to make sure it has not loosened.

FLAT CAMERA MOUNTING PLATE WITH:  
 \* 1" OF HORIZONTAL TRAVEL  
 \* ADJUSTABLE CAMERA STRAP  
 \* FITS MOST CAMERAS



***The Dual Raptor***



***The Flat Top***

## **Belt Adjustment**

The Type 12, 1200 lb. strength belt(s) that secures the beltmount camera platform to the user is designed to withstand even the strongest forces. Each squeeze buckle is rated at 300 lbs. breaking strength. Adjust the single bar slide along the belt to obtain the proper waist size. Insert the male end of the plastic squeeze buckle into the female end to secure the belt(s) to your waist. Each belt is designed so that no loose webbing will protrude from the system. Verify that there are no twists in the belt before use.

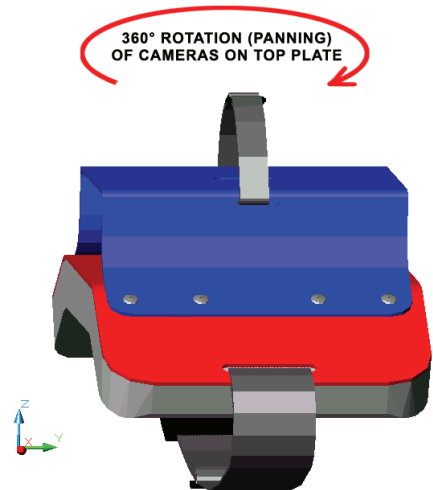
## **Wearing Your Beltmount**

Your beltmount must be attached to you before any other equipment (i.e. harness/container). Secure the belt(s) around your waist and make sure they are adequately fastened. The beltmount should ride high above your waistline with your navel centered about the foam cushion. Only after the beltmount is attached to your waist should you put on your harness or similar devices. If you put the beltmount over your harness, you could possibly cover your leg strap mounted pilot chute or create additional deployment problems, which could lead to injury or death. If you are using the beltmount while making parachute jumps, verify that the beltmount is worn under your harness and that it does not interfere with any normal or emergency procedures you may take while jumping. Do not attempt put the beltmount under your harness while you are already wearing the harness. If you have any questions on how to wear your beltmount camera platform, please contact us. If you are not comfortable with any of the above instructions, please return the unused beltmount system to us for a refund.

## **Camera Adjustment**

**Flat Top Model** - Adjustment and positioning of your camera is easy once you've attached the beltmount to your body. You should be able to reach all normal camera controls with your camera attached to the beltmount. Camera panning from 0-360° can be performed by loosening the thumbscrew under the camera and turning the camera head to the desired position. Use of wide angle lenses on your camera is recommended if you're attempting to capture your own facial features while skydiving or participating in similar activities.

**Raptor and Dual Raptor Models** - Adjustment and positioning of your camera is easy once you've attached the beltmount to your body. You should be able to reach all normal camera controls with your camera attached to the beltmount. To tilt or pan the camera, loosen the large black knob on the ball & socket system and adjust as desired. Be sure to tighten the same black knob when you're done. If you forget to adequately tighten the black knob, you run the risk of damaging your cameras and injuring yourself or others. Your camera will be able to tilt at least 180° (+/-90°) and rotate 0-360° for complete control.



## **Usage**

There are hundreds of uses for a beltmount camera platform, ranging from skydiving to mountain biking to skiing. It can be used with any sport where the user can safely attach the beltmount to his waist to capture amazing footage or stills. The camera can be pointed toward the user's face or feet, or even to the side to capture your partner.

## **Precautions**

Under normal operating conditions, wearing a beltmount camera platform will not affect the user. However, if you are participating in certain activities, such as skydiving, where the beltmount camera platform could become tangled with your parachute, you must use **extreme** caution and accept all liability for any injury or death that may occur. If you deploy your parachute in a back-to-earth position, you run the risk of entangling the beltmount with your parachute, lines, or pilot chute. Always deploy in a belly-to-earth position and make sure you are not restricted in any way from normal deployment procedures in skydiving. With other sports or activities, make sure the beltmount does not restrict your ability to perform any normal, emergency, or safety procedures that may be necessary.

## **Maintenance**

**Flat Top Model** - To clean, wipe all powder-coated parts with a damp rag. If the Type 12 belt becomes excessively worn, damaged, or frayed to a point that the integrity of the beltmount system is compromised, please contact Vertical Visions for repair options.

**Raptor and Dual Raptor Models** - To clean, wipe all powder-coated parts with a damp rag. Check all mounting fasteners and plastic buckles before each use to verify that no damage has occurred and replace if needed. If the Type 12 belt becomes excessively worn, damaged, or frayed to a point that the integrity of the beltmount system is compromised, please contact Vertical Visions for repair options.

## **Disclaimer**

Because of the unavoidable danger associated with the use of this beltmount camera platform and extreme sports such as skydiving or BASE (fixed object) jumping, the manufacturer makes no warranty, either express or implied. The equipment is sold with all faults and without any warranty of fitness for any purpose. The manufacturer also disclaims any liability in tort for damages, direct or consequential, including personal injuries resulting from a defect in design, material, workmanship, or manufacturing whether caused by negligence on the part of the manufacturer or otherwise. By using this equipment, or allowing it to be used by others, the user waives any liability of the manufacturer for personal injuries or other damages arising from such use. If the buyer declines to waive liability on the part of the manufacturer and accept the risks of wearing and using the beltmount camera platform, the buyer can return the unused equipment to the manufacturer within 15 days for a refund. By keeping or using any equipment, you and your heirs are accepting full responsibility and agree not to sue or make claims against Vertical Visions LLC or its directors, owners, shareholders, officers, employees, designers, or suppliers.

## **Questions, Comments, or Suggestions**

If you should ever have any questions, comments, or suggestions regarding the use of your beltmount camera platform, please feel free to contact us (see contact information below).

## **Feedback or Photo/Video Submissions?**

Do you have amazing photo or video captured while using your beltmount system that you'd like to share with us? We would love to view any photos, videos, or video screen captures that you can send us. Please use the contact information below to send your submissions.

## **Contact Us**

Vertical Visions  
6 Point of View  
Bridgeport, WV 26330 USA  
Telephone: (304) 933-9330

Website: [www.VerticalVisions.com](http://www.VerticalVisions.com)  
E-mail: [jbell@VerticalVisions.com](mailto:jbell@VerticalVisions.com)

